

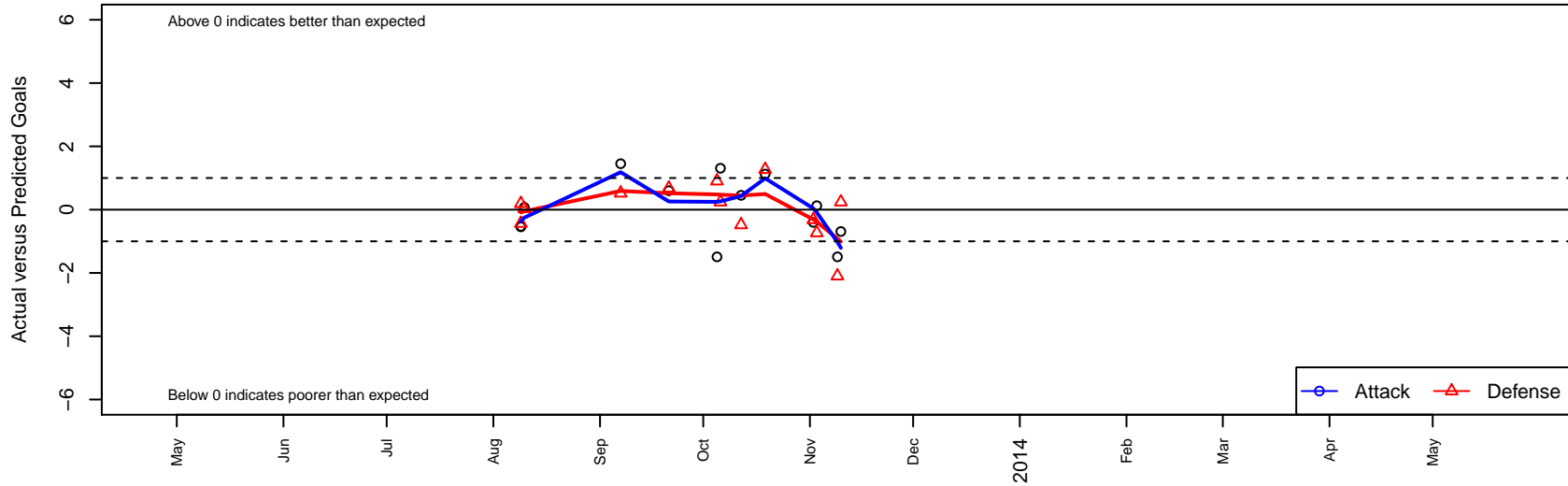
EBU Bay Oaks Gold Bombers G01

, CAN
 G01 total strength=857
 attack=1.33 defense=1.11
 alt names used:
 EBU Bay Oaks Gold Bombers G01
 EBU – Bay Oaks Gold Bombers 01

Venues played:
 Mustang Stampede Premier U12
 NorCal Premier FI1 – Region 3–4 U12



EBU Bay Oaks Gold Bombers G01
 Dots are actual minus expected GF (blue circles) and GA (red triangles).
 Blue line is smoothed change in attack strength. Red is smoothed change in defense strength.



	date	home		away		venue	pred.home	pred.away
6535	2013-11-10	EBU Bay Oaks Gold Bombers G01	0	Mustang Blast G01	1	NorCal Premier FI1 – Region 3-4 U12	0.69	1.24
6470	2013-11-09	EBU Bay Oaks Gold Bombers G01	0	San Ramon 02 Azuri G01	3	NorCal Premier FI1 – Region 3-4 U12	1.49	0.90
6419	2013-11-03	Diablo FC G01	2	EBU Bay Oaks Gold Bombers G01	1	NorCal Premier FI1 – Region 3-4 U12	1.27	0.87
6328	2013-11-02	ACC Mavericks Dynamite G01	2	EBU Bay Oaks Gold Bombers G01	1	NorCal Premier FI1 – Region 3-4 U12	1.68	1.40
6015	2013-10-19	EBU Bay Oaks Gold Bombers G01	2	Diablo FC G01	0	NorCal Premier FI1 – Region 3-4 U12	0.87	1.27
5852	2013-10-12	Livermore Fusion SC Maroon G01	2	EBU Bay Oaks Gold Bombers G01	2	NorCal Premier FI1 – Region 3-4 U12	1.52	1.55
5779	2013-10-06	Mustang Blast G01	1	EBU Bay Oaks Gold Bombers G01	2	NorCal Premier FI1 – Region 3-4 U12	1.24	0.69
5666	2013-10-05	San Ramon 02 Azuri G01	0	EBU Bay Oaks Gold Bombers G01	0	NorCal Premier FI1 – Region 3-4 U12	0.90	1.49
5361	2013-09-21	EBU Bay Oaks Gold Bombers G01	2	ACC Mavericks Dynamite G01	1	NorCal Premier FI1 – Region 3-4 U12	1.40	1.68
5040	2013-09-07	EBU Bay Oaks Gold Bombers G01	3	Livermore Fusion SC Maroon G01	1	NorCal Premier FI1 – Region 3-4 U12	1.55	1.52
4649	2013-08-10	MVLA Avalanche Blue G01	1	EBU Bay Oaks Gold Bombers G01	1	Mustang Stampede Premier U12	1.03	0.93
4609	2013-08-09	EBU Bay Oaks Gold Bombers G01	0	Arsenal FC South G01	2	Mustang Stampede Premier U12	0.54	2.19
4619	2013-08-09	Pleasanton Rage G01	2	EBU Bay Oaks Gold Bombers G01	0	Mustang Stampede Premier U12	1.56	0.53